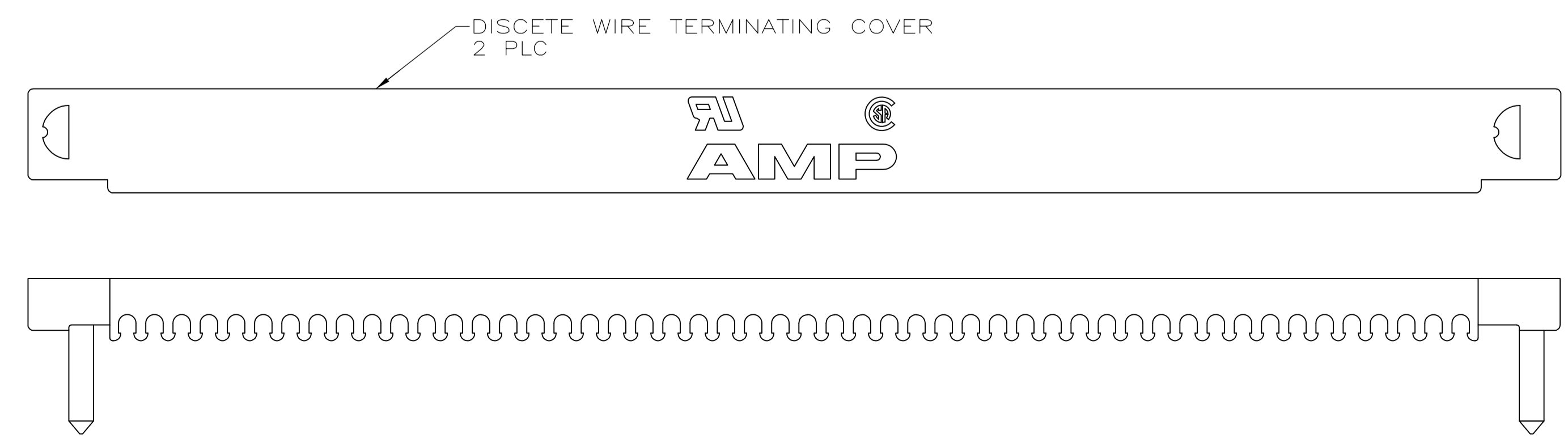
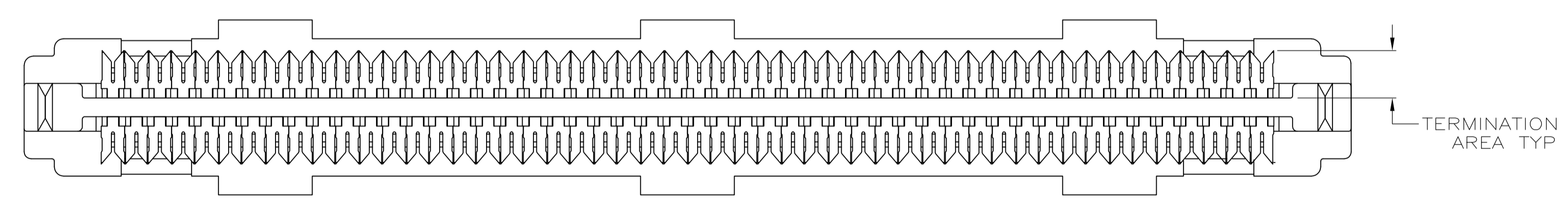


- 1 MATERIAL
CONTACTS: PHOSPHOR BRONZE.
SHELL: CARBON STEEL
HOUSING: POLYESTER, BLACK, UL 94V-0 RATED.
TERMINATING COVERS: POLYESTER, UL 94V-0 RATED; COLOR, SEE TABLE
- 2 FINISH
CONTACTS: EITHER 0.76µm [.000030] MIN GOLD PLATE OR GOLD FLASH OVER PALLADIUM NICKEL PLATE, 0.76µm [.000030] MIN TOTAL FOR A LENGTH OF 3.35 [.132] MIN FROM MATING END, 3.00µm [.000118] MIN TIN IN TERMINATION AREA, ALL OVER 1.27µm [.000050] MIN NICKEL.
SHELL: 0.25µm [.000010] MIN TIN-NICKEL OVER 3.81µm [.000150] MIN NICKEL OVER 2.54µm [.000100] MIN COPPER.
- 3 RECOMMENDED WIRE: 28 AWG OR 30 AWG, SOLID OR 7 STRAND, PVC INSULATION, REFER TO TABLE BELOW FOR INSULATION DIA.
- 4. COVERS PACKAGED SEPARATE FROM CONNECTORS IN SAME SHIPPING CONTAINER.



| | | | | | | | | |
|--------------------------|-------|--------------------------|------------------|------------------|------------------|----------------|------------|-------------|
| | GRAY | 0.74-0.79 [.029-.031] | 71.86 [2.829] | 66.60 [2.622] | 62.23 [2.450] | 9.47 [.373] | 100 | 1-5750913-9 |
| | GRAY | 0.74-0.79 [.029-.031] | 51.54 [2.029] | 46.28 [1.822] | 41.91 [1.650] | 7.44 [.293] | 68 | 1-5750913-7 |
| | GRAY | 0.74-0.79 [.029-.031] | 40.11 [1.579] | 34.85 [1.372] | 30.48 [1.200] | 7.44 [.293] | 50 | 1-5750913-5 |
| | GRAY | 0.74-0.79 [.029-.031] | 24.87 [.979] | 19.61 [.772] | 15.24 [.600] | 7.44 [.293] | 26 | 1-5750913-2 |
| | BLACK | 0.81-0.91 [.032-.036] | 51.54 [2.029] | 46.28 [1.822] | 41.91 [1.650] | 7.44 [.293] | 68 | 5750913-7 |
| | BLACK | 0.81-0.91 [.032-.036] | 40.11 [1.579] | 34.85 [1.372] | 30.48 [1.200] | 7.44 [.293] | 50 | 5750913-5 |
| OBSOLETE | BLACK | 0.81-0.91 [.032-.036] | 33.76 [1.329] | 28.50 [1.122] | 24.13 [.950] | 7.44 [.293] | 40 | 5750913-4 |
| | BLACK | 0.81-0.91 [.032-.036] | 24.87 [.979] | 19.61 [.772] | 15.24 [.600] | 7.44 [.293] | 26 | 5750913-2 |
| TERMINATING COVERS COLOR | | INSULATION OUTER DIA | D | C | B | A | NO OF POSN | PART NUMBER |

**COPYRIGHT 2005
TE CONNECTIVITY CORP
ALL RIGHTS RESERVED**

THIS DRAWING IS A CONTROLLED DOCUMENT.

| | | | | | |
|-------------------------|--|-------------------------------|----------------------|---------------------------|---------------------|
| DIMENSIONS: mm [INCHES] | TOLERANCES UNLESS OTHERWISE SPECIFIED: | DIN L VARELA - DOCKS 02-18-05 | CHK S. SHUEY 13DEC05 | APVD M. WALMSLEY 02-18-05 | NAME |
| 0 PLC ± - | 1 PLC ± - | 2 PLC ± ± 0.13[.005] | 3 PLC ± ± - | 4 PLC ± ± - | ANGLES ± ± - |
| MATERIAL | FINISH | DRAWING NO. 108-1228 | | APPLIC. SPEC 114-40029 | |
| | | WEIGHT | SIZE A1 | CAGE CODE 00779 | DRAWING NO. 5750913 |
| | | | CUSTOMER DRAWING | SCALE 5:1 | SHEET 1 OF 1 REV C1 |

STE TE Connectivity

PLUG KIT, UNASSEMBLED, DISCRETE WIRE TERMINATING COVER, .050 SERIES, AMPLIMITE